



Kodak DirectView
CR Mammography Feature
for CR 850 and CR 950/975 Systems

Mammography imaging on
premier KODAK CR Systems

Kodak DirectView CR Mammography Feature

Bring the convenience and image quality of KODAK DIRECTVIEW CR 850 and CR 950/975 Systems to your mammography department. The optional CR mammography feature, coupled with KODAK DIRECTVIEW CR Mammography Cassettes and new KODAK DIRECTVIEW EHR-M2 Screens, delivers quality mammography images while retaining all the features and capabilities of the system for general radiography examinations.

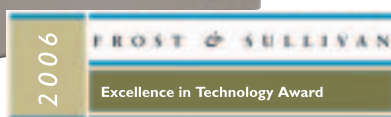


Right for your facility and workflow

- ▶ The CR mammography feature allows the CR 850 or CR 950/975 system to be used for dedicated mammography or mixed-use environments.
- ▶ Requires no change in CR procedures, workflow, or user interface.
- ▶ Multiple CR 850 and/or CR 950/975 systems can be linked with the KODAK DIRECTVIEW Capture Link System to streamline workflow and improve productivity in high-traffic areas.

Mammography-quality images

- ▶ Produce high-resolution scans with a 50-micron pixel pitch.
- ▶ The exposure latitude of CR and post-acquisition image processing can achieve more consistent image quality than conventional imaging.
- ▶ Screen integrity is maintained and screen life is maximized by a transport system that never touches screens during scanning and erasing.
- ▶ KODAK DIRECTVIEW EVP Software and KODAK Black Surround/Masking Software provide optimal quality for mammography.



Frost & Sullivan 2006 Award for Excellence in Technology cites Kodak for advancing the use of CR for breast cancer detection

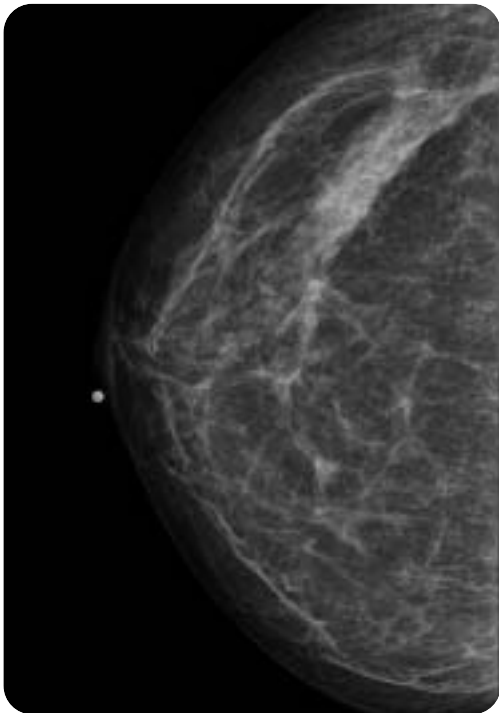


©KLAS Enterprises, LLC. All rights reserved.



Our sharpest CR screens!

- ▶ Introducing the new EHR-M2 screen—our sharpest CR mammography screen.
- ▶ Detective quantum efficiency (DQE)—higher than that of the EHR-M screen—produces higher signal and lower noise for even better mammography image quality.
- ▶ Compatibility with other KODAK CR equipment for mammography means there is no need to retrofit or upgrade cassettes.
- ▶ Screens are designed for use with the KODAK CR platform, which provides proven reliability and ease of service to reduce costs and downtime.



Cassettes designed for mammography

- ▶ KODAK DIRECTVIEW CR Mammography Cassettes allow for image capture close to the chest wall.
- ▶ Cassettes meet ISO standard for compatibility with the modern mammography Bucky. Available in two mammography sizes: 18 x 24 cm and 24 x 30 cm.
- ▶ Rugged, durable cassettes are designed for long life to reduce operational costs.
- ▶ Special pink labeling of mammography cassette assists in easy identification.

Objective image testing

The KODAK DIRECTVIEW CR Mammography Total Quality Tool* enables you to perform objective image tests and QC measurements with the same interface used for examinations. The optional complete package includes:

- ▶ A test phantom kit designed for testing 18 x 24 cm and 24 x 30 cm cassettes.
- ▶ A user guide that explains the simple testing exposures and procedures.
- ▶ Analysis and reporting software that tracks measurements that can predict the most common failure modes before image quality is adversely affected.



A graph on the first results page shows the most recent test results and passing ranges at a glance.

*Product and service availability may vary by country.

New or existing systems

- ▶ The CR mammography feature is available as an option for purchase with a new CR 850 or CR 950/975 system, or as an upgrade to an existing system.
- ▶ The single-cassette CR 850 system is streamlined for easy placement—ideal for distributed applications.
- ▶ The CR 975 system manages 16 cassettes simultaneously, providing centralized multi-cassette CR processing with “drop-and-go” decentralized workflow.
- ▶ Optional remote operations panel allows performance of most system functions away from the main unit.



A family of digital products and services to support mammography

- ▶ **KODAK CARESTREAM PACS Mammography Solutions** for managing images and information.
- ▶ **KODAK CARESTREAM Mammography Workstation** specifically designed for viewing and storing images and data.
- ▶ **KODAK CARESTREAM Information Management Solutions** enable departmental, enterprise, or regional information lifecycle management (ILM) of images and information.
- ▶ **KODAK DRYVIEW 8900 Laser Imaging System with Mammography Upgrade** for high-resolution printing of two sizes of digital mammography images, and images from multiple modalities.
- ▶ **CARESTREAM Professional Services** with an expanding portfolio of healthcare solution services.

Kodak

Licensed Product

Carestream Health, Inc.
150 Verona Street
Rochester, NY 14608

More information

Learn more about the KODAK DIRECTVIEW CR Mammography Feature for CR 850 and CR 950/975 Systems—and other offerings for digital mammography. Contact your Carestream Health representative, or call 1-877-865-6325, ext. 626.

➔ www.carestreamhealth.com

Carestream 
HEALTH

The Innovation Powering **Kodak** Health Products